



designers and researchers
for public environments



New Sheriff's Patrol Headquarters

February 23, 2016



Agenda

1. Introduction
2. Criteria
3. Approved Site
4. Approved Floor Plan
5. Interior Finishes
6. Exterior Views
7. Project Schedule

WOLD



Participants

County Administration

Dee Bruemmer

County Sheriff's Office

Sheriff Dennis Conard, Thomas Gibb, LeRoy Kunde, Eric Burton,

County Facilities and Support Services

Tammy Speidel, Chris Still

County Information Technology

Matt Hirst, Sam Samara



WOLD



Criteria

Building Criteria:

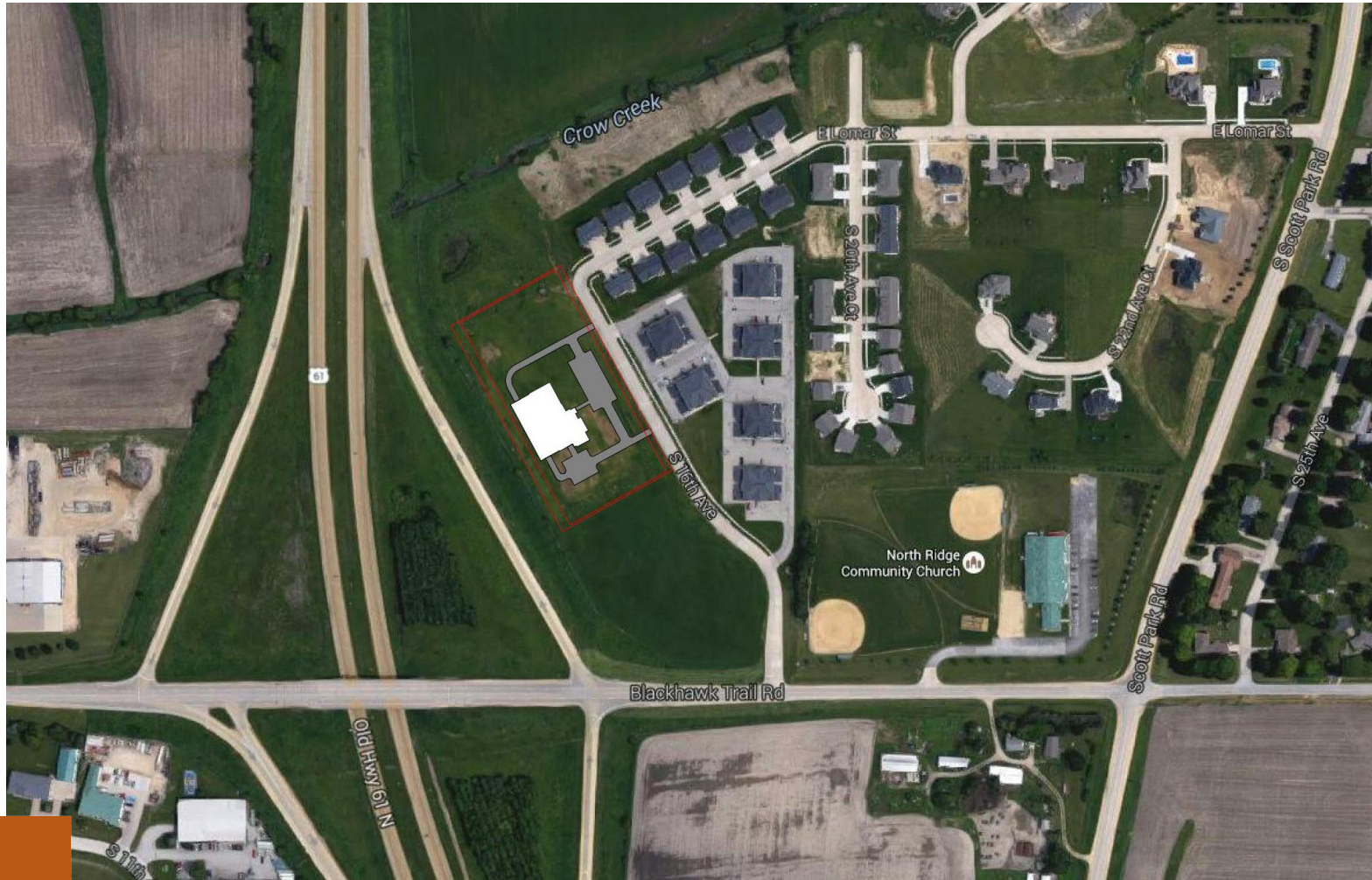
- Utilize space standards as defined by County in 1999 Study.
- Provide safe and user friendly public access and use of space.
- Building flow – how ***the building can help facilitate daily functions.***
- Accommodate for changing technology.
- Energy efficient systems and upgrades provided in all County projects as a standard of design.
- Final plan shall ***accommodate for future expansion.***
- The facility shall be flexibly planned to increase ***multi-use opportunities for training/ conferencing spaces.***
- The facility shall provide ***spaces for collaboration*** of departments/personnel and minimize “information silos” - departmental proximities that ***build functional synergies.***
- Look for ways to optimize operational efficiencies.
- The facility shall provide for ***ease of on-going maintenance*** and should be emphasized in material and finish selections. The exterior shall reflect the ***functionality, durability and maintainability*** of a public facility
- Image and materials shall be appropriate to County government while representing the best value to the taxpayers.
- The Building image shall fit into the context of the site.
- The site shall provide for ***ease of access*** and the ability to get in and out of the site quickly.
- Provide access to major highways/roadways – ***Interstate 80 and Highway 61.***
- ***Centralized location*** in County.
- Multiple Ingress/Egress site points.
- The amount of parking available shall meet the needs of the staff, of the public, and after hours use.
- Site shall provide for ***secured parking for fleet and staff vehicles.***





Site Selection

Final Site

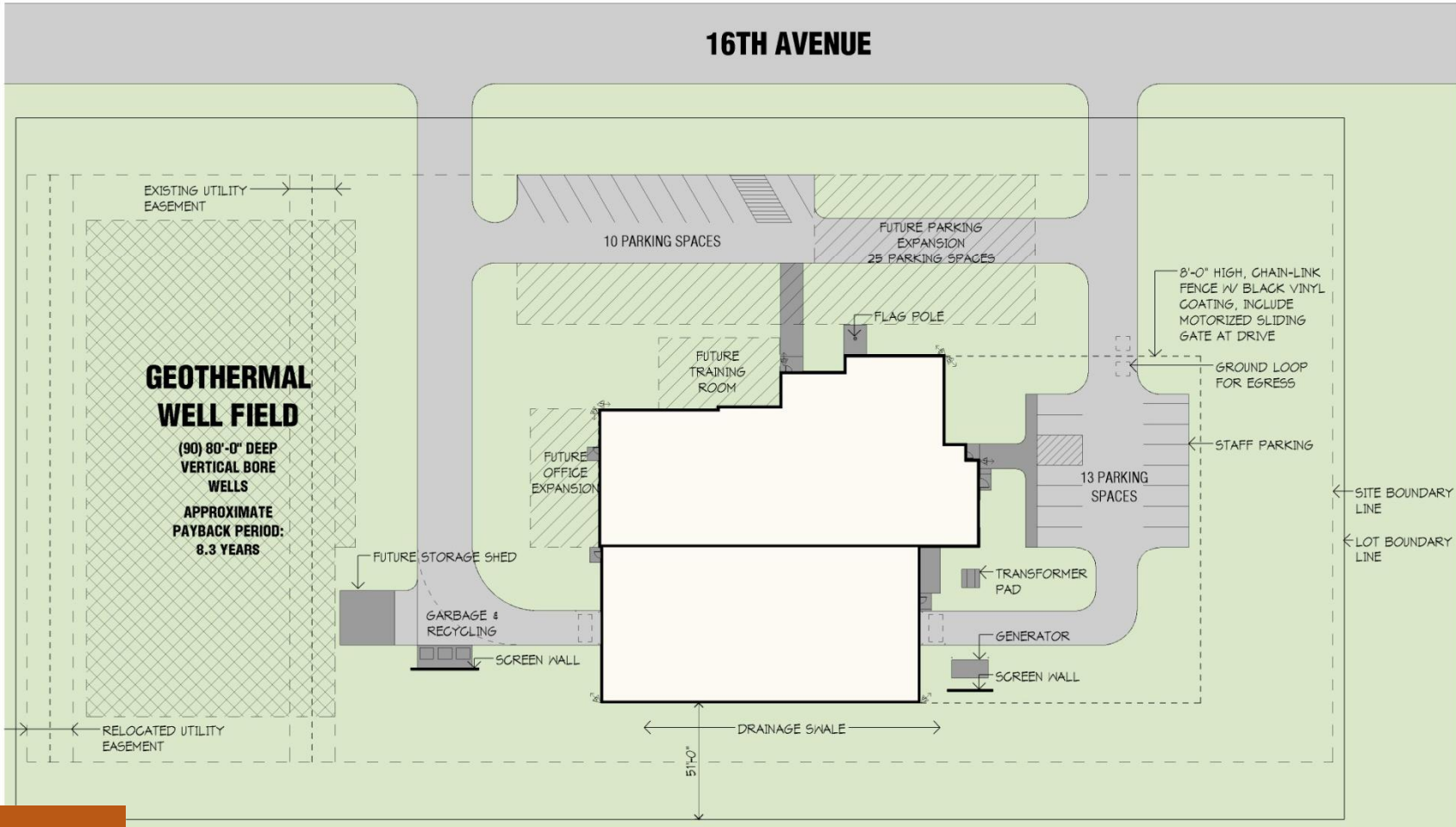


WOLD



Site Selection

Site Plan





Approved Plan

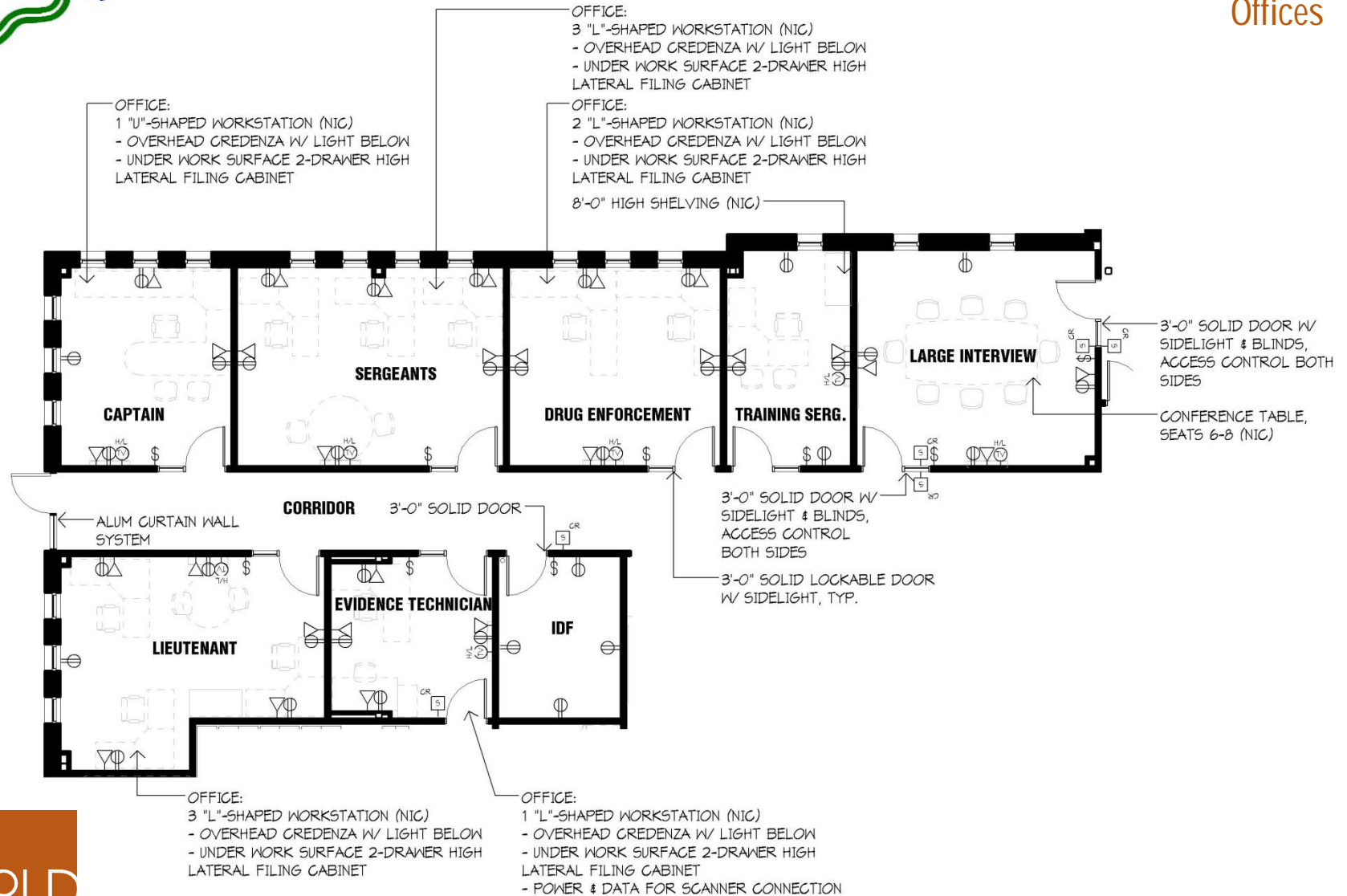
Overall Plan





Approved Plan

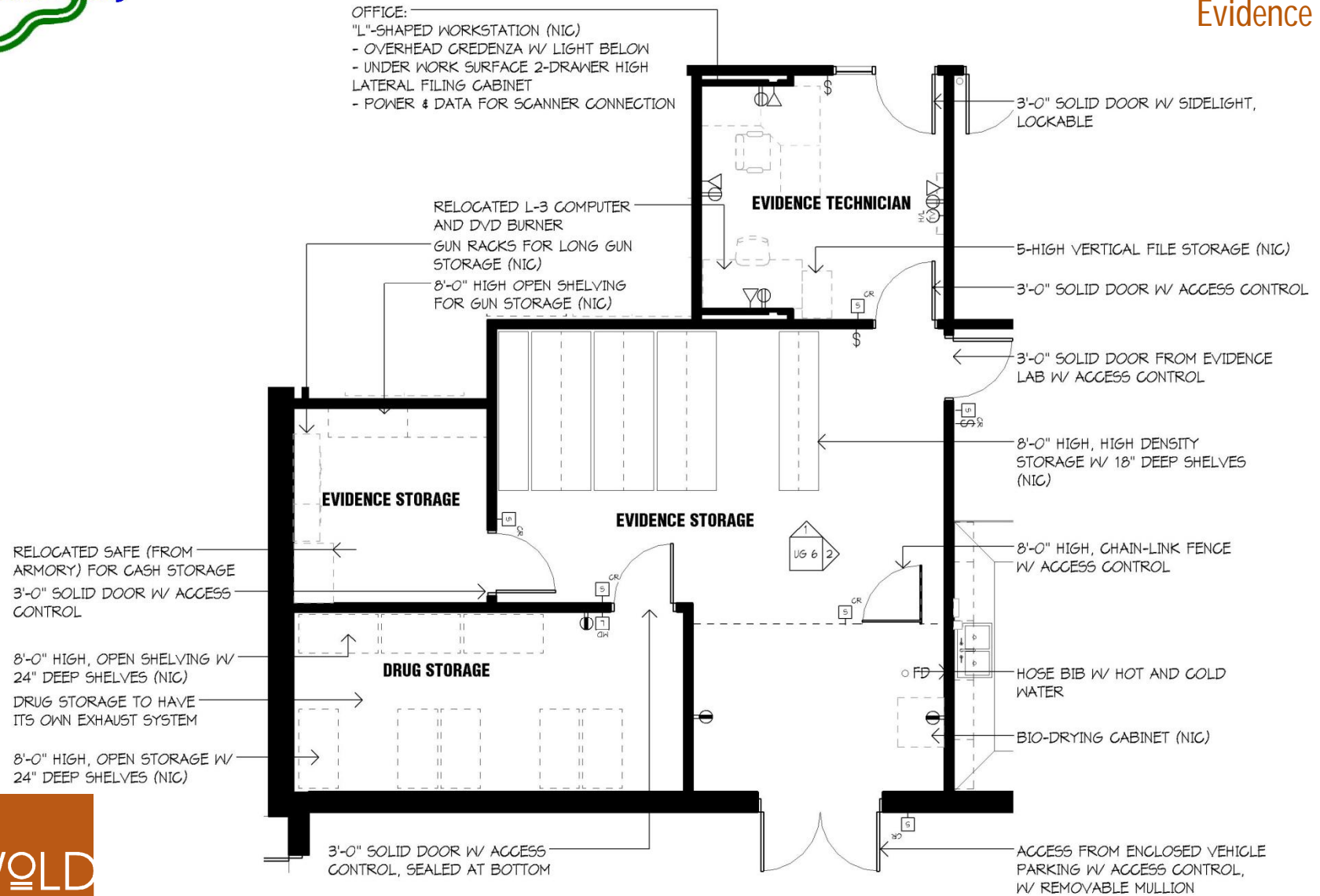
Offices





Approved Plan

Evidence





Approved Plan

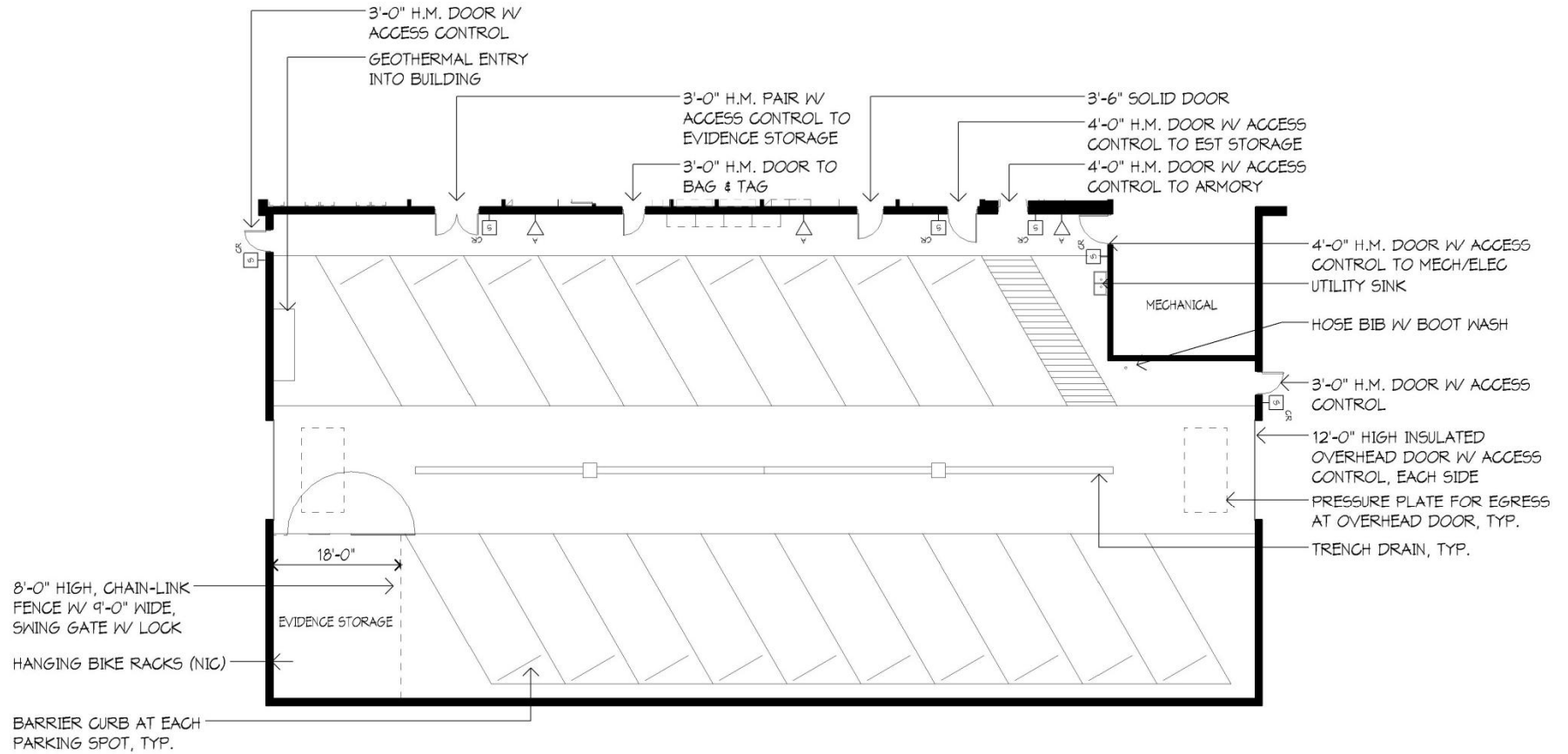
Support Spaces





Approved Plan

Vehicle Storage





Interior Finishes

Overall Plan





Exterior Views

Public Entry





Exterior Views

Staff Entry





Exterior Views

Aerial View



WOLD



Exterior Views

Highway View





Schedule

Next Steps

	2015					2016												2017											
	A	S	O	N	D	J	F	M	A	M	J	J	A	S	O	N	D	J	F	M	A	M	J	J	A	S	O	N	D
	8	9	10	11	12	13	14	15	16	17	18	19	20	21	22	23	24	13	14	15	16	17	18	19	20	21	22	23	24
Site Selection	★																												
Re-engage Project		■	■																										
Design Development			■	■																									
Construction Documents								(Three Months)																					
Bidding								(One Month)																					
Award of Bids & Contracts								(March 2016)																					
Building Construction								(Twelve Months Construction)																					
Punchlist/Closeout																					(Two Months)								
Building Fully Operational																				★ (May 2017)									





designers and researchers
for public environments

End of Presentation

WOLD